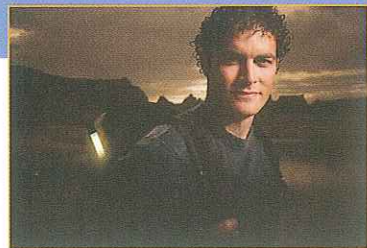


# Krill Electroluminescent Lightsticks

Krill Light products are a revolutionary advancement in lighting and light marking. Currently available in three sizes, the technology incorporates an electroluminescent (EL) panel with ultra-efficient battery power consumption into a waterproof, shockproof housing. With over 350,000 units sold worldwide, this patented design is the superior economical replacement for chemical lightsticks, and is now being used by hunters, campers, outdoor enthusiasts, the survival-minded, and the United States Military Forces.



**AA Krill Light** - as the flagship of the Krill Light's line, the AA Krill Light has been in use by the United States Military, as well as sport and survival enthusiasts, for many years. It has proven itself to be consistently reliable in the field no matter what the conditions might call for.

**Original Krill Lighting** - lasts over 120 hours per set of 2 AA batteries. Original Krill Lights are available in 360° and 180° versions.

**Extreme Krill Lighting** - nearly twice as bright as the Original Krill Lights, Extreme Krill Lights last over 50 hours per set of AA batteries. Extreme Krill Lights are available in 360° and 180° versions.

**Krill Strobe Lighting** - Everything you love about the Original and Extreme Krill Light and lasts 95% longer. This strobing option is great for marking hazards and grabbing attention. (*not shown*)



360° Light



180° Light



360° Extreme



180° Extreme

◀ **AAA Krill Light** - this lamp is reliable and durable like the Original Krill Light, yet convenient and compact enough to fit into holders and pockets designed for 4 inch light sticks. By using AAA batteries, the mini AAA Krill Light produces over 15 FL (approximately 50 CD/m<sup>2</sup>) for 30 hours.

#### AAA Krill Light Features:

- Simple and reliable on/off switch
- Long battery life - up to 30 hours
- Long life - rated at over 3000 hours
- Lightweight (1.25 oz. with batteries)
- Impact resistant and durable
- Water Resistant
- Economical - pennies per hour to use
- 5 colors - green being the brightest
- No liquids or chemical to worry about
- No bulb to replace
- Night Vision and NVG compatible



#### ◀ AA Krill Light Features:

- Simple and reliable on/off switch
- Long battery life - up to 120 hours
- Long life - rated at over 3000 hours
- Lightweight (2.75 oz. with batteries)
- Impact resistant and durable
- Water Resistant
- Economical - pennies per hour to use
- 6 colors - green being the brightest
- No liquids or chemical to worry about
- No bulb to replace
- Night Vision and NVG compatible

▶ **AA Krill Torch** - weighing just 8.25 oz. with batteries, the new extra-long Krill Light Torch is still as durable and reliable as the Original Krill Light, but bigger and better! The "larger and brighter" Krill Light Torch is 14 inches tall with 22 inches of light emitting material and over 30FL of intensity! It runs on 6 AA batteries for over 10 hours and can be used for over 2500 hours. This light is designed to replace 10" and 15" chemical light sticks and small lanterns.

#### AA Krill Torch Features:

- Simple and reliable on/off switch
- Long battery life - over 10 hours
- Long life - rated at over 2500 hours
- Rugged and powerful
- Impact resistant and durable
- Water Resistant
- Economical - pennies per hour to use
- 5 colors - green being the brightest
- No liquids or chemical to worry about
- No bulb to replace
- Night Vision and NVG compatible



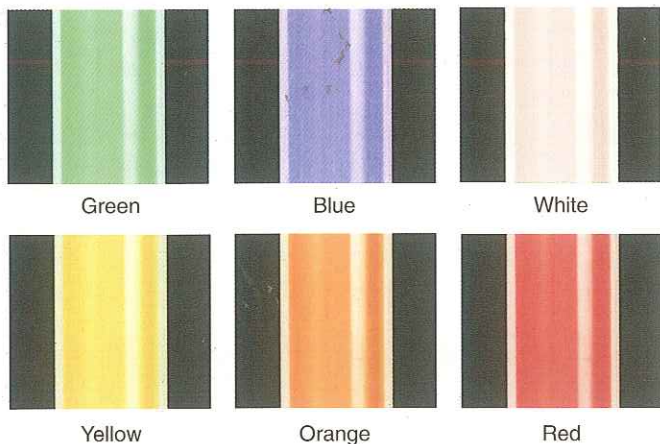


# How To Choose A Krill Lightstick



**Krill Lights Just Make Sense** - [REDACTED] has taken Electroluminescent (EL) technology and created a truly ingenious and functional product line that, unlike chem-sticks can be turned on and off. Depending on the model, it would take up to 60 chem-lights to equal one Krill Light. Operating in extreme heat and cold temperatures, the Krill Light is constructed of a rigid clear polycarbonate body, surviving drops of over 50 feet. Krill Lights are truly tough and durable products for any situation.

## KRILL COLORS IN ORDER OF BRIGHTNESS (green being the brightest)



**Krill Light Accessories**  
Expand your using and carrying options for your Krill Lights, allowing uncomparable versatility in the field.

*Note: Some accessories not shown*

Lanyard with Break-away



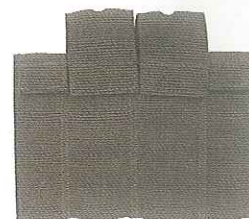
Magnetic Clip



Stake



Double with Battery Holder



Product	Brightness in Foot Lamberts (FL)	Battery Life	Available Colors					
			Green	Blue	White	Yellow	Orange	Red
2 AA Krill 360° Original	5.5 FL	Over 120 hours	●	●	●	●	●	●
2 AA Krill 180° Original	8.5 FL	Over 120 hours	●	●	●	●	●	●
2 AA Krill 360° Extreme	10.5 FL	Over 50 hours	●	●	●	●	●	●
2 AA Krill 180° Extreme	15.5 FL	Over 50 hours	●	●	●	●	●	●
2 AA Krill Infrared	Positive Signature of over 2000 feet	Over 50 hours						
2 AAA Krill 360° Mini	10.5 FL	Over 30 hours	●	●	●		●	●
6 AA Krill 360° Torch	30 FL	Over 10 hours	●	●	●		●	●
6 AA Krill 180° Torch	30 FL	Over 10 hours	●	●	●		●	●
2 AA Krill 360° Original Strobe	5.5 FL	Over 200 hours	●	●	●	●	●	●
2 AA Krill 360° Extreme Strobe	15.5 FL	Over 90 hours	●	●	●	●	●	●

## Krill Light Applications

- Marking hazards (barb wire, holes, latrine...)
- Marking locations and trails
- Marking teams for war games
- Marking distances for hunters
- Marking and prioritizing injured or wounded
- Covert lighting and map reading
- Fishing (fresh water, salt, big game)
- Signaling
- Tent lighting/bedding down
- Camping
- Latrine trek (doesn't wake others up)
- Night horse rides (does bother horses)
- Night light
- Scuba tank light
- Dog safety marker
- Back-up running lights, boats
- Jogger's safety light
- Aviation (marshalling wands)
- Novelty (concert, fairs, Halloween, parties...)
- Emergency preparedness kits
- Night vision goggle work, both color and IR
- Pilot's light (night vision saving for night flying)